

RERA No.: RC/REP/HARERA/GGM/837/569/2024/64
dated 14.06.2024 also available on www.haryanarera.gov.in
License no. 98 of 2011 dated 11.11.2011

LUSHLANDS 

adani
Realty



adani
Realty



Adani Realty: The real visionaries of real estate

Adani Realty is the real estate arm of the prestigious Adani Group. With this name comes a lot of trust and responsibility. Adani Realty stands at the forefront of 'Nation Building' and embodies the values of 'Growth with Goodness.'

With every project we seek to seamlessly blend design aesthetics with cutting-edge construction technology, creating real estate masterpieces in cities including Ahmedabad, Mumbai, Pune, and Gurugram. Our portfolio spans across residential, commercial & hospitality projects with having approximately 24 million Sq. Ft. area developed* & an additional approximately 61 million Sq. Ft. area under development*.

Be it designing dream homes or erecting futuristic workplaces for businesses to thrive, Adani Realty takes great pride in fuelling the real estate development of India. Our award-winning residential, commercial and retail spaces exemplify craftsmanship and superior design. This excellence also extends to our exclusive social clubs - The Belvedere Golf and Country Club, Ahmedabad, and Belvedere Club, Gurugram.

Our commitment to global real estate standards is unwavering. Adani Realty continues to deliver projects of unparalleled quality and craftsmanship, contributing significantly to India's thriving real estate sector and being a key stakeholder in its modernisation and development.




Our belief system:

Embodying a philosophy rooted in community, our every endeavour is shaped through the lens of communal spirit. We believe in engaging in a dialogue, while weaving connections that shape the fabric of our society.

Our ethos can be summed up as:
#AddressOfGoodness.

This isn't just a location, it's the sanctuary of joy that you call home. An abode where memories breathe life, positive emotions flourish, and every brick laid is a testament to dreams being realised. It's more than a dwelling; it's your feel-good haven, where even ordinary moments feel extraordinary.

This is your happy place.



ADANI PROJECTS

Some of our benchmark projects

We dream of great heights. And we don't mean just our buildings.

To transform the landscape of real estate by committing to innovation & sustainability, and have an unwavering dedication to our consumers by providing them with spaces that are state-of-the-art and of significant value.



SHANTIGRAM
Ahmedabad, Gujarat



THE VIEWS
Ghatkopar (East), Mumbai



OYSTER GRANDE
Sector 102/102A, Gurugram



LINKBAY RESIDENCES
New Link Road, Andheri West



OYSTER ARCADE
Sector 102, Gurugram

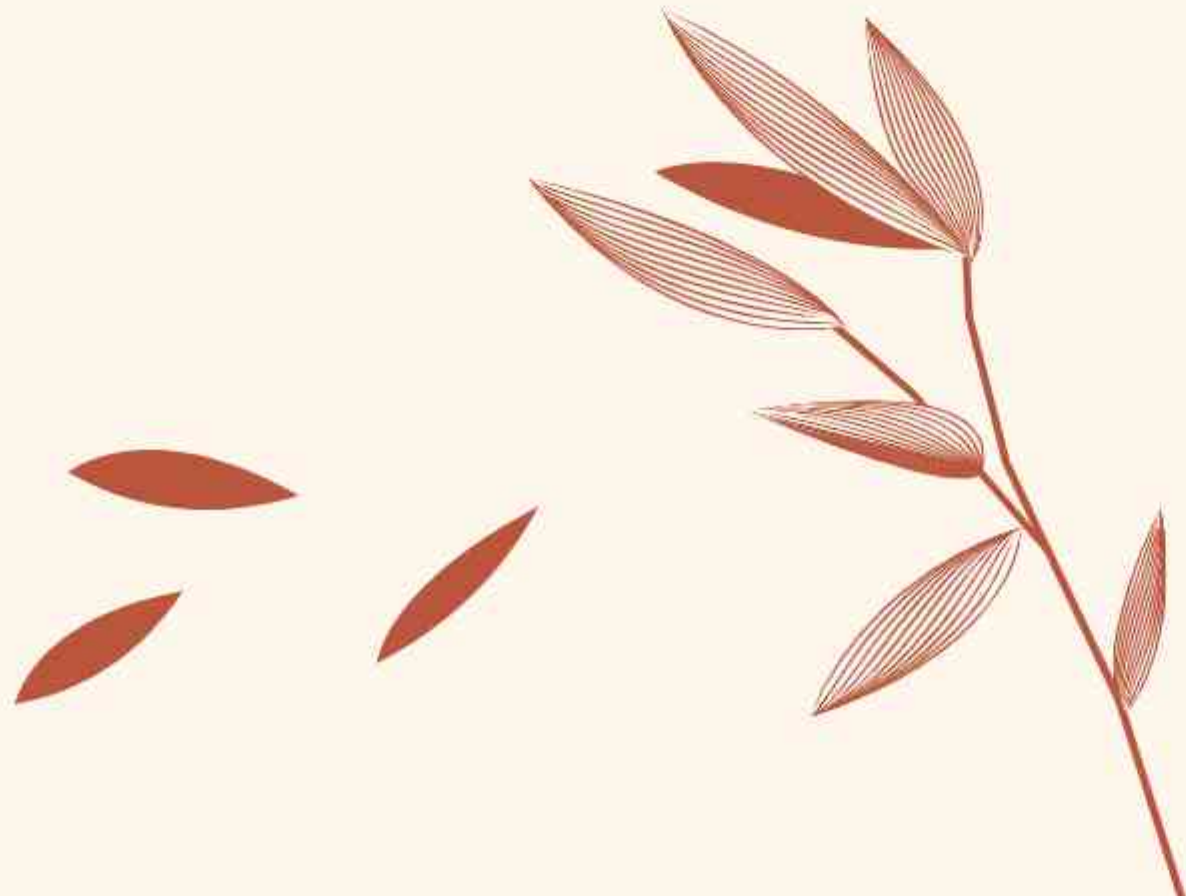


SAMSARA (M BLOCK)
Sector 60, Gurugram



TEN BKC
Near MIG Cricket Club, Kala Nagar, Bandra East

*Our unique concept of
blending luxury and nature
with state-of-the-art
amenities has manifested
in this landmark project in
North India. A new beginning
that will give you butterflies.
Literally.*



LUSHLANDS 

— by —
adani
Realty

The woods are lovely, dark & deep.

Experience luxury forest living.

Imagine a home with your very own private forest to explore. A place where the luxuries of urban life blend with the unbridled joy of discovering the gems of nature. Lushlands by Adani Realty was birthed from this very thinking - a novel experience that seamlessly blends opulence and nature. We imagined a sprawling area with greens and blues as far as the eye can see.

This landscaped area was meticulously crafted for it to feel pristine and natural, not fabricated. All four towers are connected by the podium. With the forest ravine running down its spine this haven of modern day amenities and natural beauty is probably one of its kind.

This is a space that lives and breathes with you.

This seemingly endless expanse of tranquility interconnected with ramps, floating boardwalks and bridges is for residents of all age groups to revel in and explore. There exists a zone for children to unleash their creativity and relish their formative years. Our play areas tailors zones to different age groups—dedicated spaces for toddlers and inquisitive school-goers.

This forest is for all. And forever.

Our gym area, surrounded by lawns, encourages residents of all ages to indulge in outdoor exercise, yoga, and meditation. In valuing our most treasured age group—the elderly—we provide ease and accessibility with dedicated reading spaces, congregational lawns, reading zones, and chit-chat seating areas.

As the day gives way to dawn, the city's hustle and bustle come to life. Yet, our sanctuary of green and blue serves as a tranquil escape, eliminating the urban chaos for joggers immersed in nature's soothing embrace, with the water features taking center stage. The lush greens are punctuated with pergolas, gazebos, and artwork. Spaces to spend time with family and friends. Spaces to unwind. Spaces to live.

As the soothing and relaxing sound of cascading water creates a sense of nirvana, one can't help but wonder if this is the true meaning of luxury. We know it is.

Spacious,

Serene &

Spectacular.

70%

Open area with forest and a central ravine

4

Towers with 2 units per floor

8

Palatial duplex penthouses

208

Luxurious apartments

4

BHK + lounge + powder room + utility/s. room

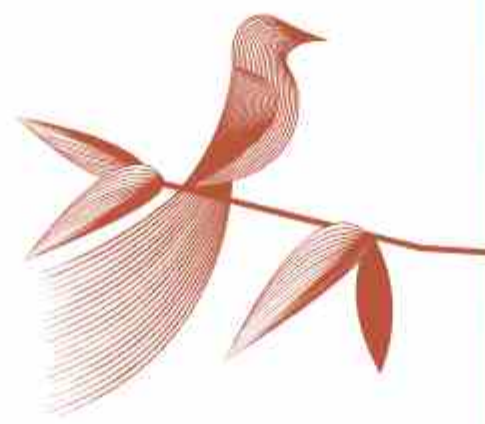
2

Clubhouses

A place where nature meets stature.

LUSHLANDS BY ADANI REALTY

The facade's design takes into consideration both day and night impressions. During the day, the facade reflects natural light, emphasising the project's connection with the outdoors. In the evening, the carefully planned lighting elements contribute to a captivating and inviting nighttime ambiance. The Facade complements the lush forest-themed environment, crafting a visual harmony that captivates the senses.

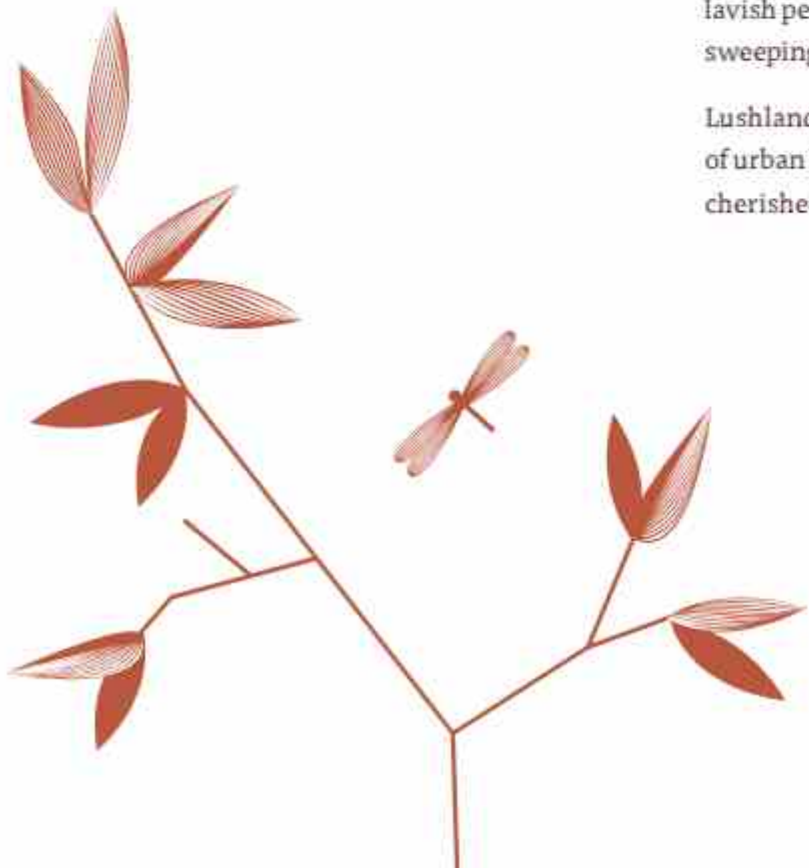


Lushlands by Adani Realty is an oasis of tranquility which is designed to feel like your 'Natural Habitat'.

This opulent residential haven rests in the prime location of Sector 2, Gwal Pahari, on the main Gurugram-Faridabad road. With breathtaking panoramic views, Lushlands by Adani Realty is like a wonderland straight out of a book. Discover a harmonious blend of architectural elegance and natural splendour, where apartments and penthouses become more than mere abodes. Crafted by the visionary CP Kukreja Architects and landscaped by Integral Designs, Lushlands by Adani Realty emerges as a sanctuary in the bustling heart of the metropolitan city.

This residential development is built around a flourishing forest ravine, flanked by residential towers on all sides. Apartments in these towers are the absolute epitome of luxury, with Towers A and C standing 32 floors tall, which exude opulence from every surface. Towers B and D greet the skies at 22 floors tall, with luxurious apartments and lavish penthouses. These are as much of a spectacle as the sweeping panoramic views from their terraces.

Lushlands by Adani Realty seeks to redefine the nature of urban living. A place where every day unfolds like a cherished chapter in the story of your life.



Stay connected to nature, and to the city.

With sweeping views of the Teri Golf Course, Lushlands by Adani Realty is the new address of luxury living. The locale has experienced a remarkable surge in social infrastructure and upscale hospitality projects.

Strategically located at Gwal Pahari, Lushlands by Adani Realty offers a perfect blend of serene natural living and city convenience. With excellent connectivity to South Delhi, Faridabad and easy access to major corporate hubs and rich cultural attractions, it's ideal for professionals and culture enthusiasts alike. The development features tranquil green spaces and water bodies, creating a peaceful oasis.

Surroundings

Teri Golf Course to the South

Increased Social Infrastructure
and Hospitality Projects

Connectivity

10 Mins to Golf Course Road

10 Mins to Rapid Metro

20 Mins to Cyber City

40 Mins to Airport

Access

On Gurugram-Faridabad road,
proposed to be widened to 150m



Disclaimer: Map not to scale. The map is not necessarily accurate to the surveying or engineering standards. The map shown here is for illustration purposes only. It does not represent the ground survey and represents only the approximate relative location and boundaries. The location map depicts an indicative and selective representation of certain key developments around the Project. However, the Developer makes no representation regarding continuity/existence of these developments/landmarks going forward. Further, the driving time indicated is tentative and actual time may vary.



Legends

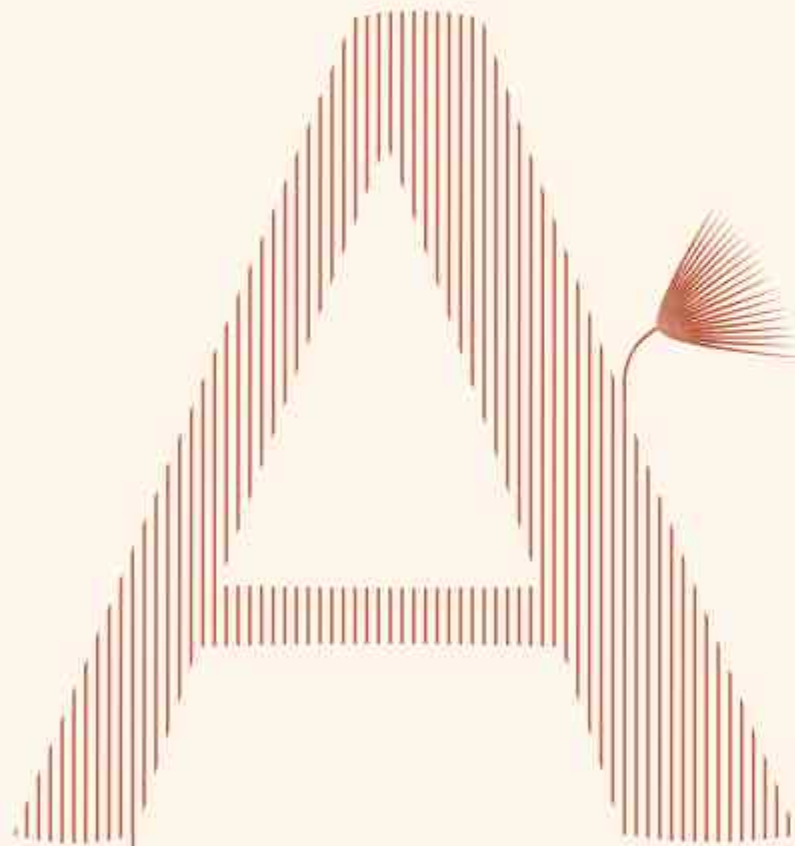
- | | | | | | | |
|------------------------|---------------------|---------------------------|-------------------------|-------------------------------|-----------------|---------------------|
| 1 Entry & Exit | 5 Tower Entry | 9 Water Stream | 13 Congregation Lawn | 17 Jogging & Cycling Track | 21 Tennis Court | 25 Forest |
| 2 Grand Canopy | 6 Visitors' Parking | 10 Floating Boardwalk | 14 Yoga & Party Lawn | 18 Sports Club Entrance Plaza | 22 Cricket Net | 26 Sculpture Garden |
| 3 Basement Ramp | 7 Viewing Deck | 11 Forest Level Boardwalk | 16 Zen Garden | 19 Swimming Pool | 23 Kid's Pool | 27 EWS |
| 4 Social Club Drop Off | 8 Gazebo | 12 Aromatic Garden | 15 Outdoor Fitness Area | 20 Half Basketball Court | 24 Jacuzzi | |



This plan is for illustrative purposes only. All specifications are tentative and subject to change till final completion of the Project as per applicable laws. This brochure contains artistic impressions and no warranty is expressly or impliedly given that the completed development will comply in any degree with such artistic impressions as depicted. All layouts, plans, specifications, dimensions, designs, measurements and locations are indicative, not to scale and are subject to change as may be decided by the developer or the competent authority. Staff furnishings, cupboards, fixtures and gadgets are not part of the offering and are only indicative in nature and are only for the purpose of illustrating the design. All drawings, including layout and floor plan, are part of the standard specification/commitment/contract to be provided. It is clarified that as per sanctioned drawings & approved Revised Building Plan for the Group Housing Colony "SUNSHINE", Village Gwal Pahal, Sector - 2, Gurgaon ("Project"), buildings/towers mentioned therein have been referred to as Tower - 1, 2, 3 & Tower - 4, which for ease of reference hereinafter shall be referred as Tower - D, C, B & Tower - A respectively.

4 Towers

At its heart, an expanse of open area with forest and a ravine breaks the monotony of city views, creating a lush haven for tranquility to flourish.



Stilt + 32 Floors

2 Apartments to a Core

4 BHK + Lounge + Powder Room +
Utility/S. Room

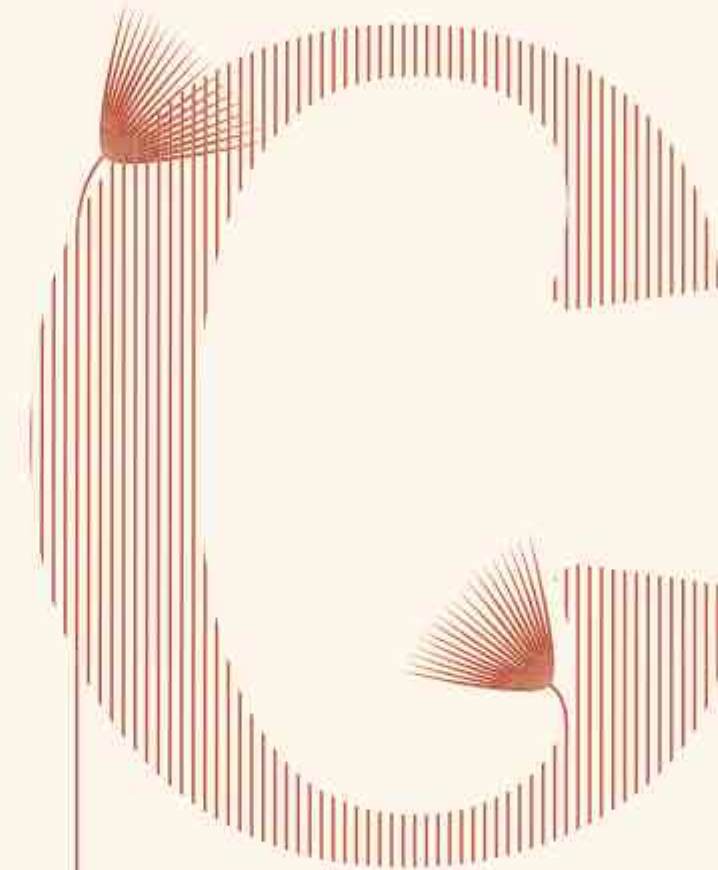


Stilt + 22 Floors

2 Apartments to a Core

4 BHK + Lounge + Powder Room +
Utility/S. Room

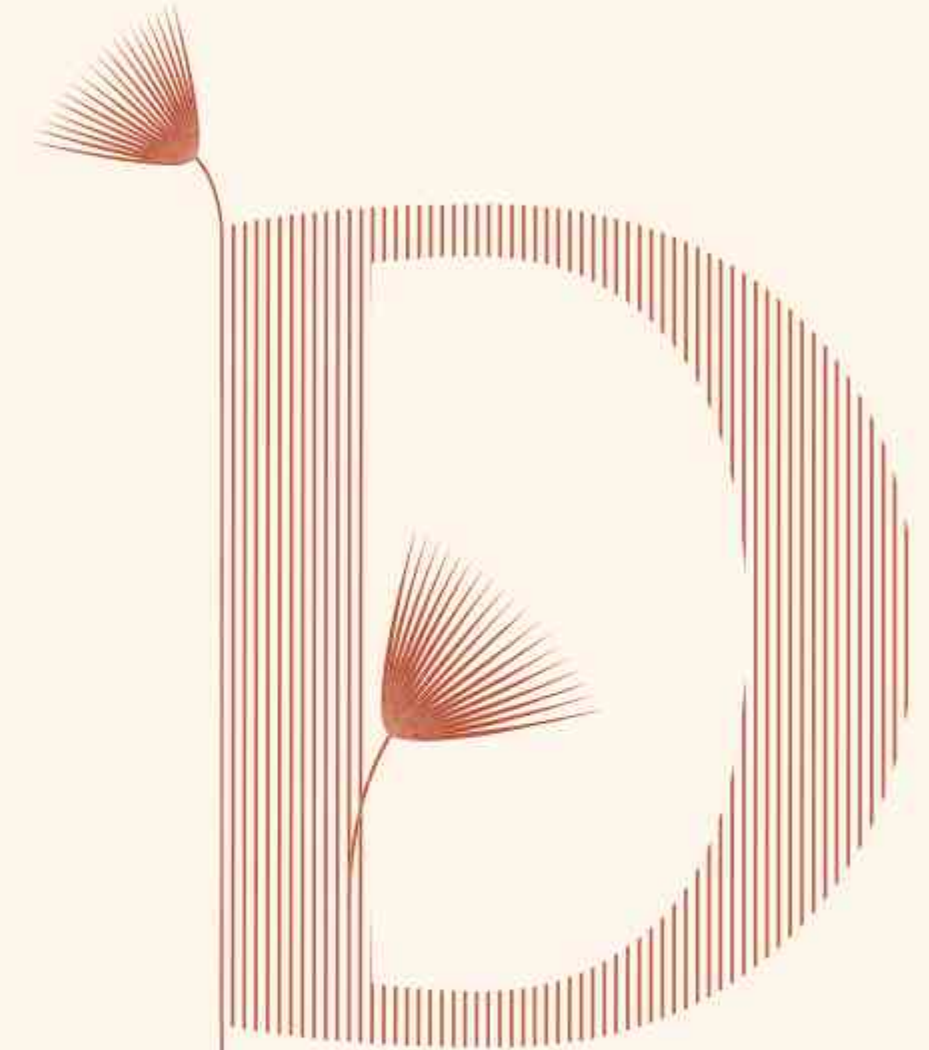
4 Duplex Penthouses with
6 BHK + Lounge + Powder Room +
Utility/S. Room



Stilt + 32 Floors

2 Apartments to a Core

4 BHK + Lounge + Powder Room +
Utility/S. Room



Stilt + 22 Floors

2 Apartments to a Core

4 BHK + Lounge + Powder Room +
Utility/S. Room

4 Duplex Penthouses with
6 BHK + Lounge + Powder Room +
Utility/S. Room

An architectural bird's-eye-view:

Envisioned as an urban sanctuary within the bustling metropolis, our project offers shelter from the rapid pace of urban life, inviting residents to reconnect with nature and themselves. An integral component of our design is the forest that transcends conventional living. This immersive concept ingeniously utilises the site's natural topography.

Best explored on foot

The entire area is pedestrianised to foster community interaction with the natural surroundings. Vehicles are directed into tower basements, leaving the ground level for recreational spaces. A space beckoning to be explored and relished.

Nature's creation, for recreation

Thoughtfully landscaped areas are sprawled across the property. We've crafted a step forest with a flowing water stream, evoking the serenity of a riverine landscape. Beyond the aesthetic allure, our architectural design also champions environmental consciousness, ensuring a harmonious blend of beauty and sustainability. The forest ravine, connects the two hubs of community engagement - the social club and the sports club. The ravines and the floating boardwalk invites the residents of Lushlands to revel in their wondrous beauty and find a sense to calm and reconnection through the healing embrace of nature.

Tree selection

The trees are selected based on local ecology and biodiversity. Chosen for their low water requirement, ability to withstand Gurugram summers, and serve as an attraction for local birds to nest in.

A sanctuary for sport

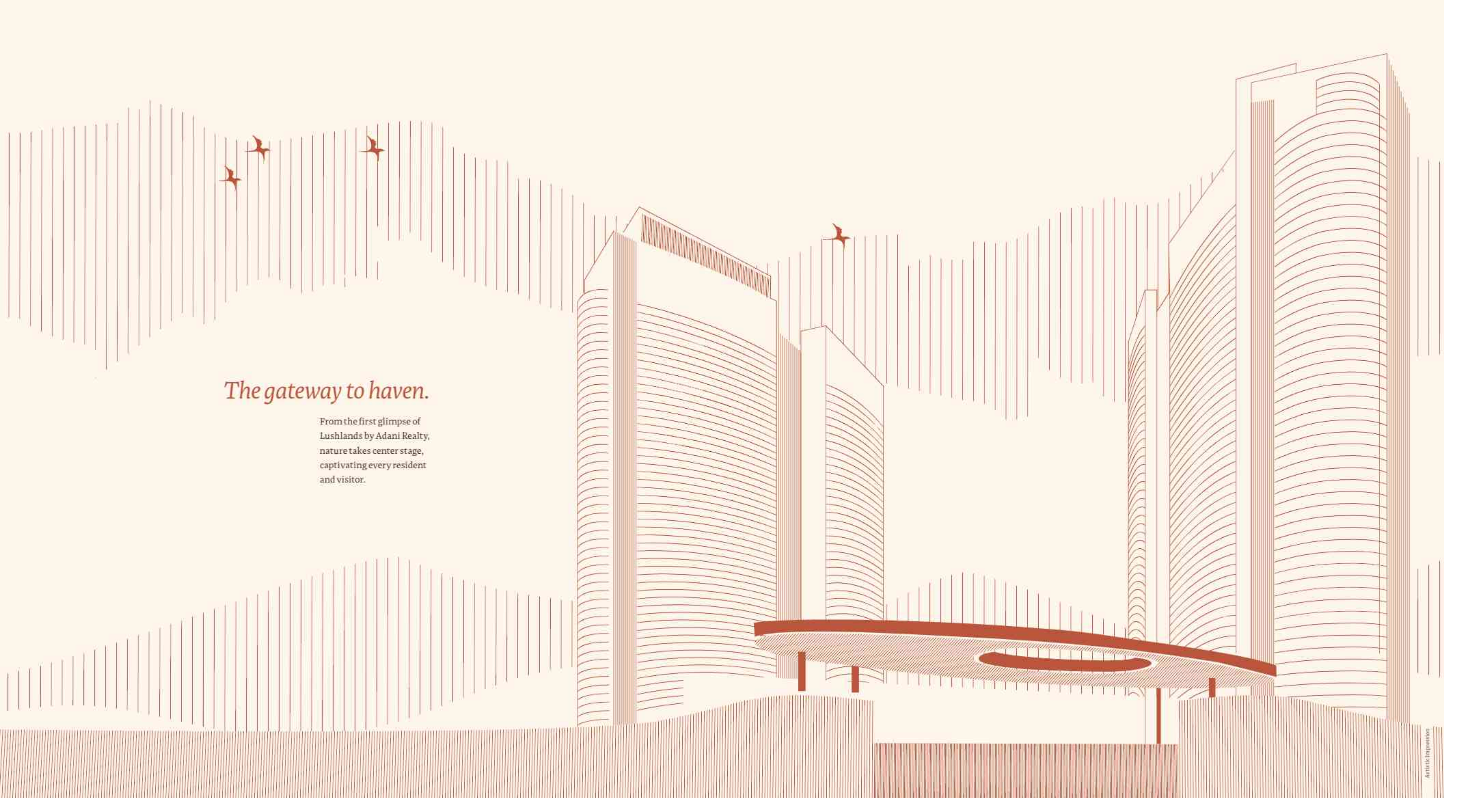
Our sports club merges an infinity pool with the enchanting ravine, creating an unparalleled resort-like experience for residents. The vibrant metropolitan interface coexists with the bustling pedestrian pathways.

Serenity meets security

Our towers are more than residences, they're fortresses of luxury that prioritise the safety of our residents. Boasting of sophisticated entry systems, vigilant surveillance, and well-lit common areas, our commitment to security is unparalleled.

Even the birds at Lushlands are treated to stunning views.





The gateway to haven.

From the first glimpse of Lushlands by Adani Realty, nature takes center stage, captivating every resident and visitor.



A grand welcome for visitors.

The elliptical form of the entrance portal, with a cut-out for a tree adds a touch of grandeur. The boundary wall and gate design echo picturesque surroundings of this lush residential complex.





*No Vehicles.
Only Verdant Beauty.*

A ramp takes all vehicles directly to the basement, leaving the podium level absolutely vehicle-free. This not only enhances the natural beauty of the podium, but also makes it a worry-free zone for kids and residents to move about freely.

Be overwhelmed with pristine views, even underground.

Towers can be accessed through the main ground floor entrance or the basement drop off. The basement offers a peak into the forest and allows natural light from the above to come through, and dance on the water body below to create beautiful reflections. This terrarium-like feature also incorporates floating planters and palm trees rise which branch out of the basement and into the podium.



BASEMENT DROP OFF LOBBY

Viewing Deck

The viewing deck offers an idyllic vantage point for observing water birds, butterflies, and squirrels frolicking in their natural habitats, making it an ideal spot to connect with nature's tranquil beauty. Vehicle access is confined to the front of the property, with all vehicles directed to basement parking upon entry. This thoughtful design transforms the podium into a serene, car-free zone, enhancing the natural ambiance. Here, residents can delight in the seamless integration of lush landscapes, sparkling water bodies, and blooming flowers.





Grand, Green & Gorgeous.



*'Forget not that the earth delights to feel
your bare feet and the winds long to play
with your hair.'*

KHALIL GIBRAN



*A forest retreat that's
just an elevator ride away.*

This botanical marvel unfolds as a melange of colours that chase hues with the seasons. The trees within our forest are meticulously chosen, keeping in mind the local ecology and biodiversity.

VIEW OF SOCIAL CLUB AND TOWERS

Party Lawn

Enclosed in a manicured landscape and granite-cladded walls, this lawn serves as a place to plan a beautiful outdoor gathering.



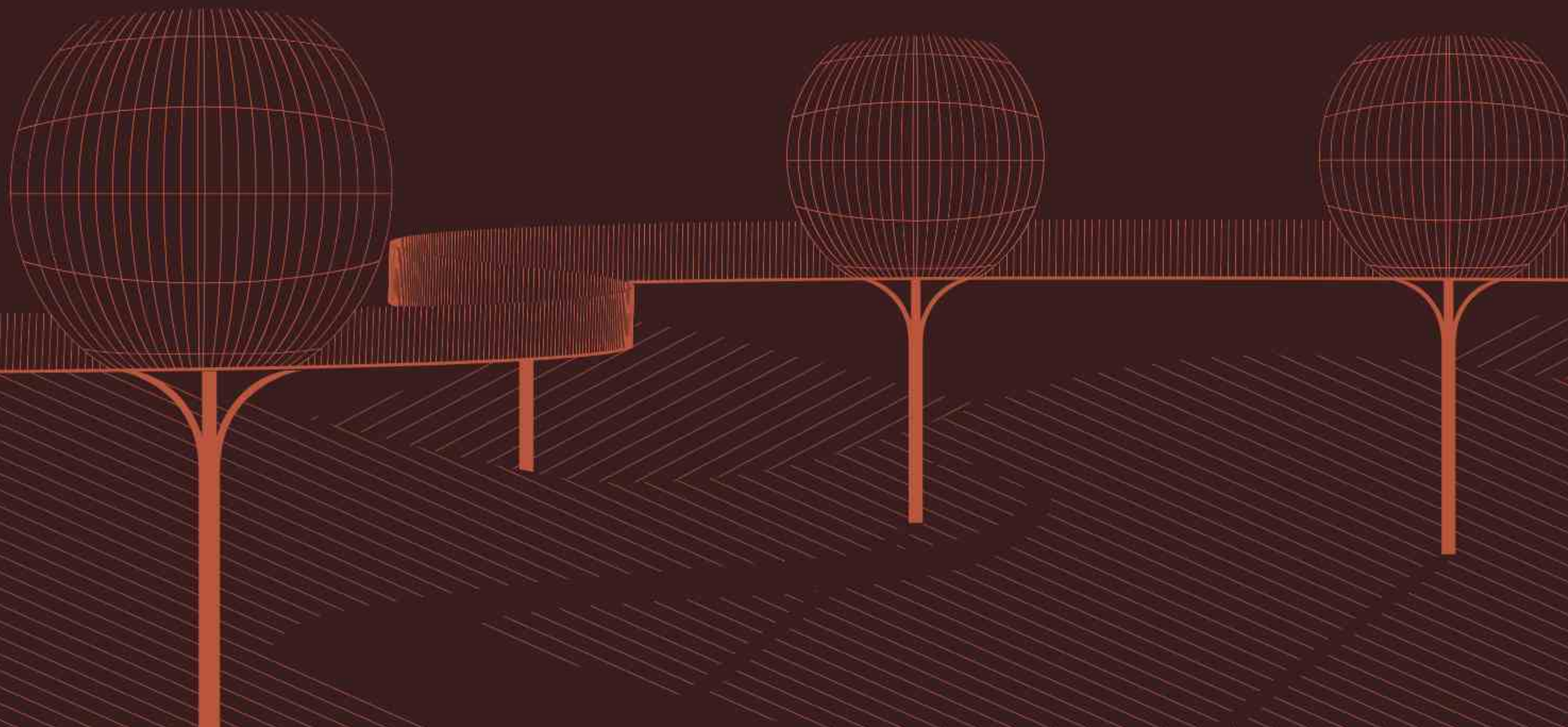


Congregation Lawn

Nestled in lush greenery, our picturesque Congregation Lawn offers tranquility and relaxation. Amidst rustling leaves and chirping birds, find peace and connection that rejuvenates the soul.

Pause, Breathe & Relish.

As residents relish a captivating stroll amidst nature, they experience a new vantage point of the lush country around them.



Floating Boardwalk

Our floating boardwalk gracefully links the two podiums, creating not just a pathway but a series of pause points to relish the gifts of nature. Residents are invited to linger, absorbing the expansive views of the greenery and to lose a moment or two in finding themselves.



Tranquil Retreat

A shallow stream meanders, starting as a waterfall and terminating into a lake at the Social Club.





Gazebos with inviting ravines of lushery

A place to take a moment and soak in the surroundings. These seating plazas are peppered all across the landscaped podium to allow you to have a sit and relish the beauty of the forest. Perfect little nooks, tucked away amidst the greens.

WATER BODY & GAZEBO IN FRONT OF TOWER C



The Serene Oasis

A place where water and time stands still, teeming with life in every form. Home to a variety of species of birds and fish, this pond serves as an artful tapestry where humans and nature coalesce.





*Delightful
in the day,
dazzling
in the dark.*

LANDSCAPE NIGHT VIEW

*A grand welcome,
every time you come home.*

The tower lobbies welcome the occupants with a double height lobby. Designed from sustainable materials with earthen tones, this grand entrance is an inviting and charming space.



TOWER ENTRY

APARTMENT FEATURES

From the cream of the crop.

Size and Configuration

The residences span an array of sizes and configurations, crafted to cater to your lifestyle preference. These homes are designed with immaculate attention to detail, ensuring versatility to accommodate your vision.

Penthouses

Lushlands by Adani Realty offers a selection of duplex penthouses, granting residents the luxury of king-sized luxury living. These premium abodes are thoughtfully designed to be exclusive and personalised, and to serve as a testament to an elevated lifestyle.

Balconies and Outdoor Spaces

Cantilevering balconies and outdoor spaces help residents connect with their roots. These spaces are designed to enrich the overall living experience, fostering a sense of openness and tranquility.

Lifestyle Amenities

Beyond the allure of an opulent home, residents also enjoy access to an array of lifestyle amenities, enriching their living experience with a holistic and fulfilling way.



Living & Dining Room

Spaces crafted for families to cherish and relationships to flourish, the living and dining areas are designed keeping in mind their significance as the heart of any home. Bathed in natural light and ventilated naturally through openings on either sides, the gentle flow of air creates a natural, refreshing ambiance. A column-less design renders an unobstructed sprawling area to configure as per your preferences.



Family Room



Master Bedroom

The crown that jewels your fortress in the sky - the master suite. An immersive panorama of the captivating vista is available in abundance thanks to the corner glazed windows with a wrap-around balcony. A space flushed with plush, but oozing with warmth.



Children's Room



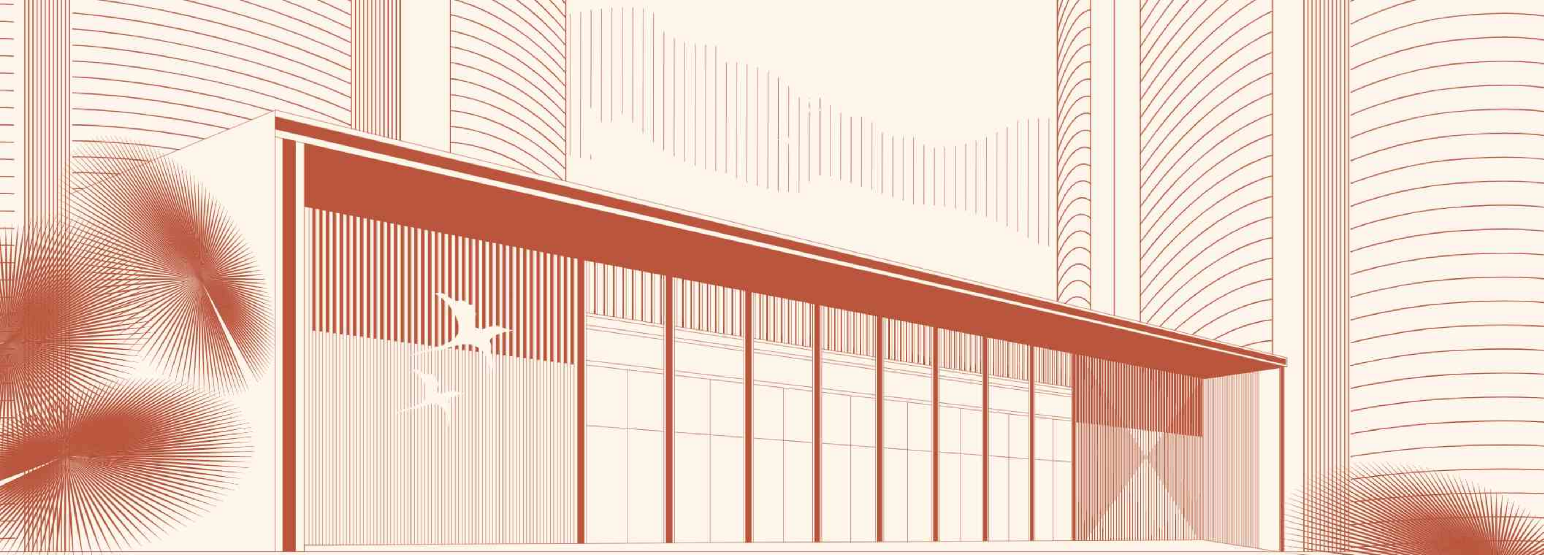
Bathroom



Balconies

Sweeping balconies envelop each unit with glass railings that offer an uninterrupted view of the surroundings. The ample depth allows seating areas and pretty little nooks to be created in these airy spaces. A sip of morning coffee with a view, or the winding down of a long day - all while soaking in majestic sunrises and marvellous sunsets are what these spaces are designed for.





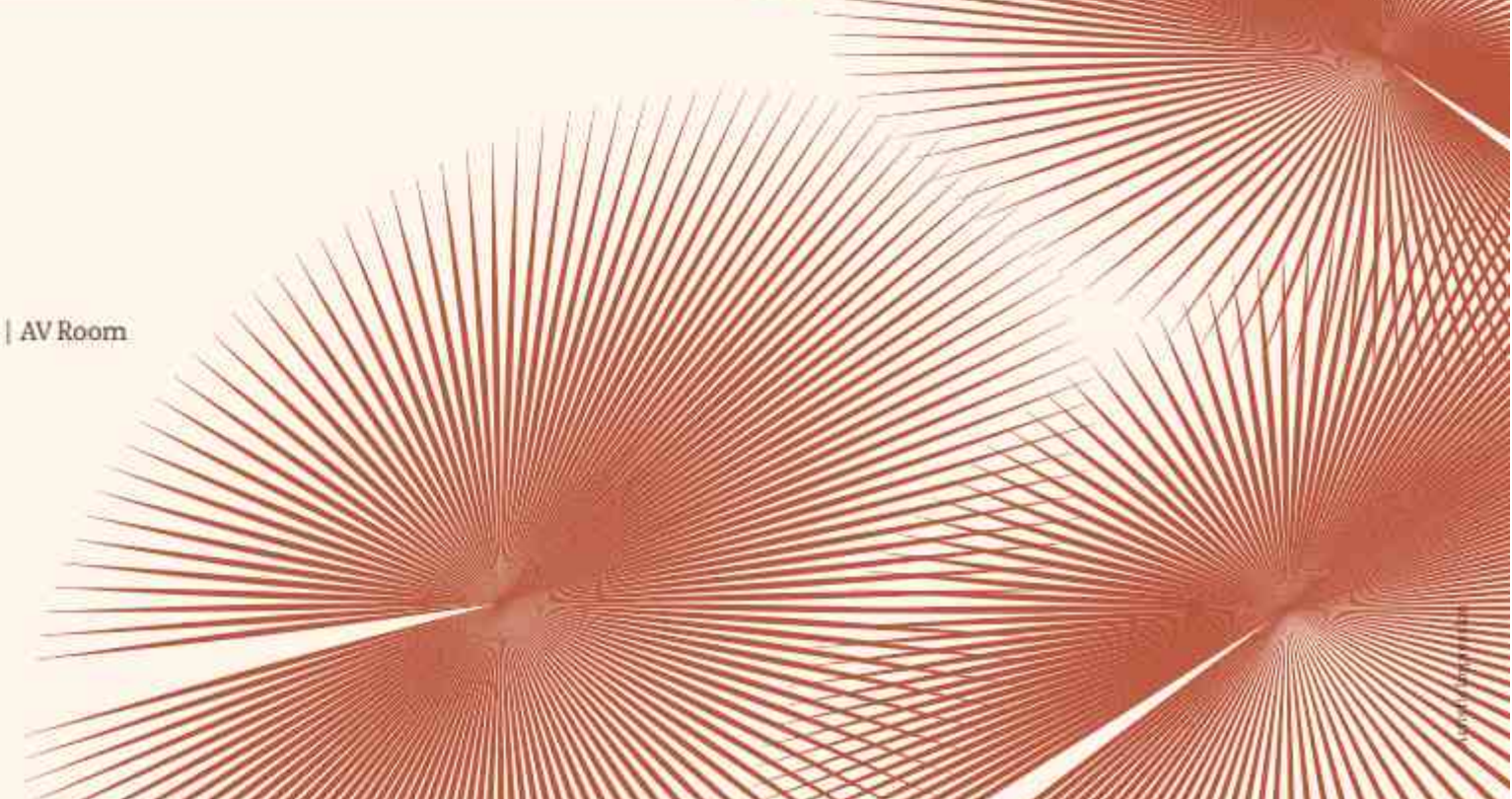
Lush Hub

The Social Club

Our social club is a spectacle of architecture mastery. The iconic entrance, parallel to the approach road greets you with a sensory treat, with views of the verdant surroundings. This panorama can be relished from two vantage points. The gallery on the upper level offers panoramic vistas of the meandering forest ravine, while the tranquil pond at the lower level captivates the senses with idyllic reflections.

Amenities

Multi-Purpose Hall | Library | Salon | AV Room
Business Centre | Cafe | Card Room







*A social club
with views of
a lakehouse.*

SOCIAL CLUB

Aqua Lush

The Sports Club

Nestled at the furthest edge of the property, the Sports Club feels more like a resort retreat. The infinity pool blends into the forest ravine. Vibrant metropolitan features take centre stage, enveloped in the aesthetic of the forest, complete with state-of-the-art safety and security measures.

Amenities

Infinity Sports Pool | Kids Pool Area | All Weather Indoor Pool
Cricket Pitch | Lawn Tennis & Half Basketball Court | Gym
Yoga Room | Billiards Room | Steam & Sauna | Badminton Court
Juice Bar



Stay in pink of health, amidst the green.





Infinity Pool & Kid's Pool Area

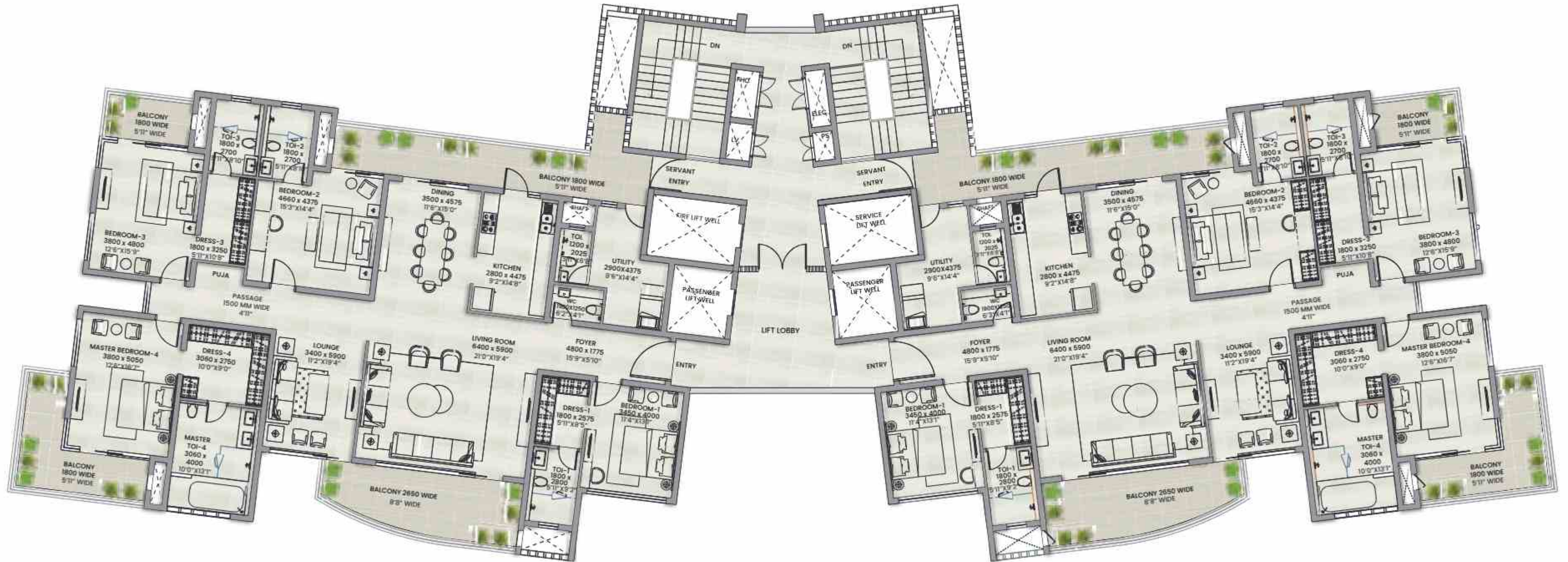


All-Weather Indoor Pool

Tower A & C

- 4 BHK + Lounge
- + Powder Room
- + Utility/S. Room

CLUSTER PLAN



Tower B & D

- 4 BHK + Lounge
- + Powder Room
- + Utility/S. Room

CLUSTER PLAN



Tower A & C

4 BHK + Lounge
+ Powder Room
+ Utility/S. Room

Carpet Area:
247.10 M²
(2659.71 Sq. Ft.)

Balcony Area:
61.11 M²
(657.82 Sq. Ft.)

UNIT PLAN



Tower B & D

4 BHK + Lounge
+ Powder Room
+ Utility/S. Room

Carpet Area:
305.80 M²
(3291.59 Sq. Ft.)

Balcony Area:
72.70 M²
(782.55 Sq. Ft.)

UNIT PLAN



DISCLAIMER: The drawings, plans & specifications are typical drawings based on approved plans and are for reference only. Customers/tenants are advised to refer to actual layout, sections and copy of approved plans for all specific. It is clarified that any construction or drawings approved Revised Building Plan for the Group Housing Colony "ISLANDS", Village Gov. Palali, Sector-3, Gurgaon (Haryana), building/tenants construction should be done as per the approved plans of Tower D, C & Tower A respectively.

DISCLAIMER: The drawings, plans & specifications are typical drawings based on approved plans and are for reference only. Customers/tenants are advised to refer to actual layout, sections and copy of approved plans for all specific. It is clarified that any construction or drawings approved Revised Building Plan for the Group Housing Colony "ISLANDS", Village Gov. Palali, Sector-3, Gurgaon (Haryana), building/tenants construction should be done as per the approved plans of Tower D, C & Tower A respectively.

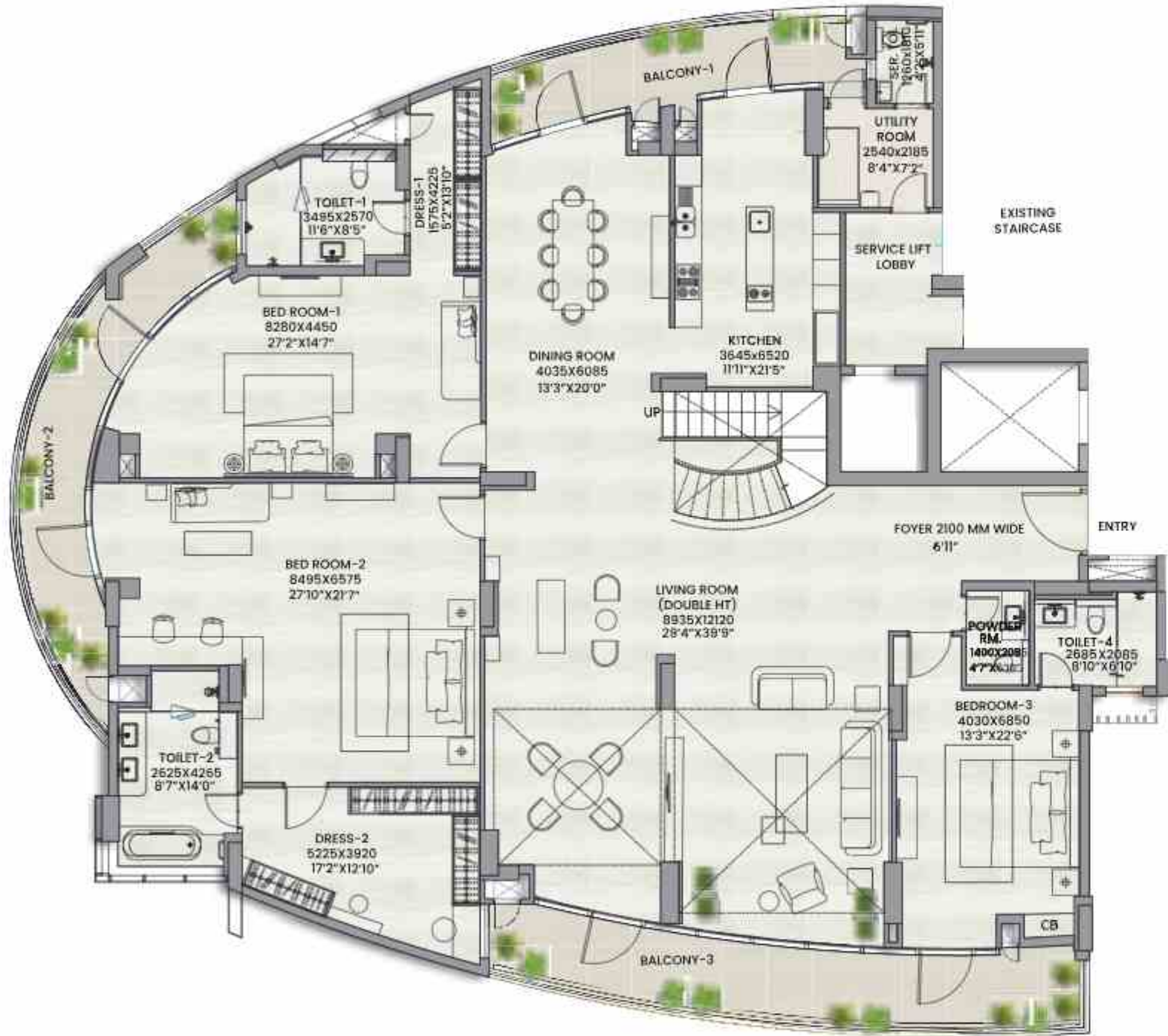
Tower B & D

6 BHK + Lounge
+ Powder Room
+ Utility/S. Room

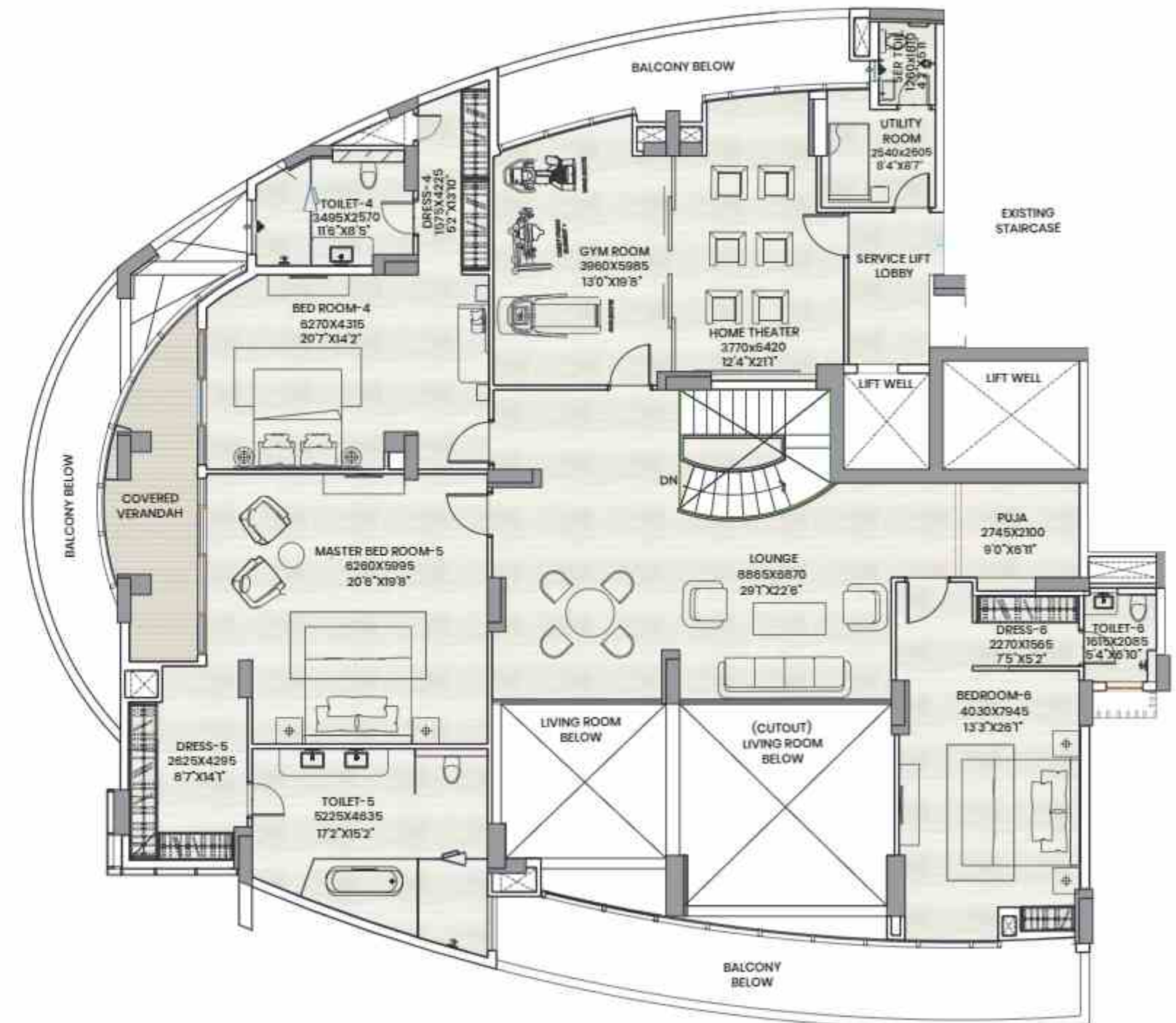
Carpet Area:
602.38 M²
(6483.99 Sq. Ft.)

Balcony Area:
58.51 M²
(629.82 Sq. Ft.)

Lower Level UNIT PLAN



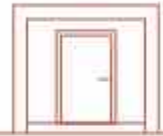
Upper Level UNIT PLAN



DISCLAIMER: The drawings/plans depicted herein are typical floor plans based on approved plans and are for reference only. Customers/tenants are advised to refer to actual original architectural drawings and approved plans for unit specifics. It is clarified that no particular drawings are approved. Revised Building Plans for the Group Housing Colony "ISLANDIA", Village of Palali, Sector-3, Gurgaon (Haryana), Haryana Government's sanctioned floor plans are referred to as Tower-C, 1 & Tower-D, which for ease of reference herein shall be referred as Tower-C, 1 & Tower-D respectively.

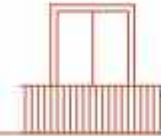
DISCLAIMER: The drawings/plans depicted herein are typical floor plans based on approved plans and are for reference only. Customers/tenants are advised to refer to actual original architectural drawings and approved plans for unit specifics. It is clarified that no particular drawings are approved. Revised Building Plans for the Group Housing Colony "ISLANDIA", Village of Palali, Sector-3, Gurgaon (Haryana), Haryana Government's sanctioned floor plans are referred to as Tower-C, 1 & Tower-D, which for ease of reference herein shall be referred as Tower-C, 1 & Tower-D respectively.

Specifications



Unit Entrance Lobby

Floors- Imported marble
Walls- Acrylic emulsion paint
Ceiling- OBD



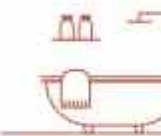
Balcony

Floors- Tiles
Walls- External grade paint
Ceiling- External grade paint



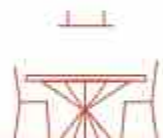
Kitchen

Floors- Tiles
Walls- Tiles upto 2' above counter and acrylic emulsion paint in balance area
Ceiling- OBD
Kitchen Counter Top- Granite counter
Fittings / Fixtures- Modular kitchen (above & below counter) with hob & chimney, double bowl sink, instant geyser, provision for piped gas supply



Bathrooms

Floors- Tiles
Walls- Combination of tiles, acrylic emulsion paint & mirror
Ceiling- False ceiling with OBD
CP Fittings / Sanitary Ware- CP fittings of standard make, wash basin, wall hung WC
Others- Marble counter top, geyser, exhaust fan, toilet paper holder & towel rail of standard make



Living / Dining

Floors- Imported marble
Walls- Acrylic emulsion paint
Ceiling- OBD



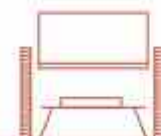
Master Bedroom

Floors- Laminated wooden flooring
Walls- Acrylic emulsion paint
Ceiling- OBD



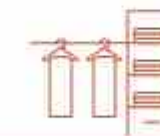
Lounge

Floors- Imported marble
Walls- Acrylic emulsion paint
Ceiling- OBD



Home Theatre / Gym Room (Penthouse)

Floors- Laminated wooden flooring
Walls- Acrylic emulsion paint
Ceiling- OBD



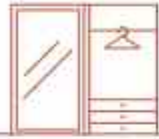
Utility Room

Floors- Tiles
Walls- OBD
Ceiling- OBD



Utility Toilet

Floors- Tiles
Walls- Tiles
Ceiling- OBD
CP Fittings / Sanitary Ware- CP fittings of standard make, wash basin floor mounted WC



Bedrooms & Dress Area

Floors- Laminated wooden flooring
Walls- Acrylic emulsion paint
Ceiling- OBD



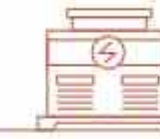
Doors

Main Door- Veneered polished
External Glazing- Aluminium frames with toughened glass with wire mesh shutters in balcony windows only
Internal Doors- Laminated flush door



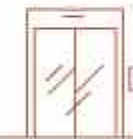
Electrical

Security- Entrance audio video door phone and intercom, fire detection and fire alarm system for all the units
General / Others- VRF air conditioning in living/dining and all bedrooms
Electrical- Modular switches with copper wiring. Electrical fixture in balcony only



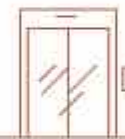
Power Back-Up

Apartments-
A) 4 BHK + lounge + powder room + utility/ s. room load not exceeding - 12.5 KVA
B) For duplex & penthouse load not exceeding - 18.75 KVA
*DG capacity shall be at 70% of load factor of individual apartment and 70% overall diversity for total diversified load of apartments as well as diversified load of common areas



Ground Floor Lift Lobby

Floors- Imported marble
Walls- Imported marble & texture paint
Ceiling- False ceiling, OBD



Typical Lift Lobby (Rest of the floors)

Floors- Marble look alike tiles
Walls- Marble look alike tiles & texture paint
Ceiling- False ceiling, OBD



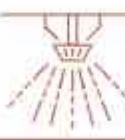
Others

Eco friendly environment with rainwater harvesting system, and use of treated water from STP for flushing and horticulture



Plumbing

CPVC & UPVC piping for water inside the toilet & kitchen with vertical down takes



Fire Fighting System

Fire fighting system with sprinklers smoke detection system etc

Adani Realty

Adani Realty is the real estate arm of one of India's leading infrastructure and development entities – the Adani Group.

With its commitment to 'Nation Building' and 'Growth with Goodness', Adani Realty is developing real estate projects in India's most promising destinations, integrating the most refined design aesthetics with cutting-edge construction technology. So far, the company has developed real estate spaces that include residential, commercial, and social club projects across Ahmedabad, Mumbai, Pune and Gurugram.

12+
Years Young

50+
Awards Won

7,000+
Happy Families

24 Mn. Sq. Ft.
Area Developed *

61 Mn. Sq. Ft.
Area Under Development *

adani

Realty

ADANI INFRASTRUCTURE AND DEVELOPERS PVT. LTD.

Corporate Office - 3rd Floor, Miracle Mile, Sector 60, Golf Course Extension Road, Gurugram 122011, Haryana, India

Sales Gallery - Gwal Pahari, Sector 2, Gurugram 122003, Haryana, India

Registered Office - 10th Floor, Shikhar, Nr Adani House, Mithakhali Six Roads, Navrangpura, Ahmedabad 380009, Gujarat, India

T 1800 108 0009 | www.adanirealty.com

RERANO: RC/REP/HARERA/GGM/837/560/2024/64 DATED 14.06.2024 ALSO AVAILABLE ON WWW.HARYANARERA.GOV.IN | LICENSE NO. 98 OF 2011 DATED 11.11.2011

Disclaimer: The images, appearances, colours, etc. given herein are mere artistic impressions for representational purposes only and do not constitute an offer, an invitation to offer and/or commitment of any nature between the promoter and the recipient. The DRA/Information herein is intended to give a general understanding of the subject matter and is subject to various conditions/approvals/permissions/terms of an development applicable in State of Haryana and in further subject to change without any further notice. Reader must therefore request to verify all details, including area, amenities, services, terms of sale and payment schedule and other relevant terms independent of work by the promoter or contractor and/or any decision of buying any apartment in the said project. The binding offering shall be governed by the terms and conditions of the Agreement for Sale only. Our official website is www.adanirealty.com, email address is info@adanirealty.com and phone no. 1800-108-0009. In no event will the Promoter be liable for any claim made by the reader including seeking any compensation and or withdrawal for any of the inaccuracies in the information provided in the advertisement, though all the efforts have been made to ensure accuracy. We also do not hold any responsibility for any information provided by any third party or any equity dealer or made available on any website or email communication other than the official website of Adani Realty. DRA No. - 10754 sq. ft., 114 sq. ft. - 136 sq. ft.